



FIVE  
ESTUARIES  
OFFSHORE WIND FARM

# FIVE ESTUARIES OFFSHORE WIND FARM

## VOLUME 6, PART 6, ANNEX 7.10.2: CULTURAL HERITAGE WIRELINES AND VIEWPOINTS - PART 2

Application Reference  
Application Document Number

EN010115  
6.6.7.10.2: Cultural Heritage Wirelines and  
Viewpoints - Part 2

Revision  
APFP Regulation:  
Date

A  
5(2)(a)  
March 2024



Project	Five Estuaries Offshore Wind Farm
Sub-Project or Package	Environmental Statement: Volume 6, Part 6, Annex 7.10.2: Cultural Heritage Wirelines and Viewpoints - Part 2
Document Title	6.6.7.10.2: Cultural Heritage Wirelines and Viewpoints - Part 2
Application Document Number	6.6.7.10.2
Revision	A
APFP Regulation	5(2)(a)
Document Reference	005118054-01

COPYRIGHT © Five Estuaries Offshore Wind Farm Ltd

All pre-existing rights reserved.

This document is supplied on and subject to the terms and conditions of the Contractual Agreement relating to this work, under which this document has been supplied, in particular:

#### LIABILITY

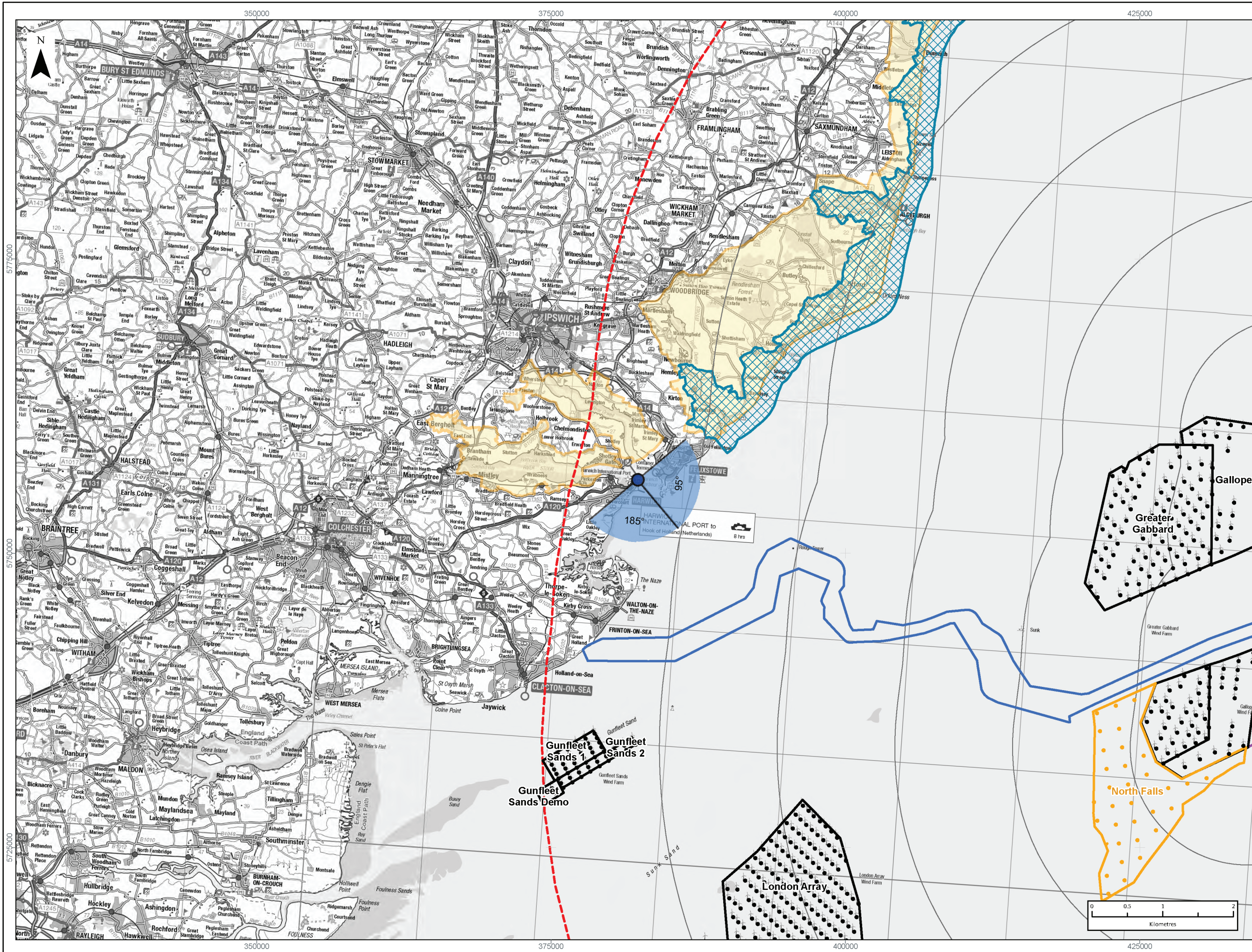
In preparation of this document Five Estuaries Offshore Wind Farm Ltd has made reasonable efforts to ensure that the content is accurate, up to date and complete for the purpose for which it was contracted. Five Estuaries Offshore Wind Farm Ltd makes no warranty as to the accuracy or completeness of material supplied by the client or their agent.

Other than any liability on Five Estuaries Offshore Wind Farm Ltd detailed in the contracts between the parties for this work Five Estuaries Offshore Wind Farm Ltd shall have no liability for any loss, damage, injury, claim, expense, cost or other consequence arising as a result of use or reliance upon any information contained in or omitted from this document.

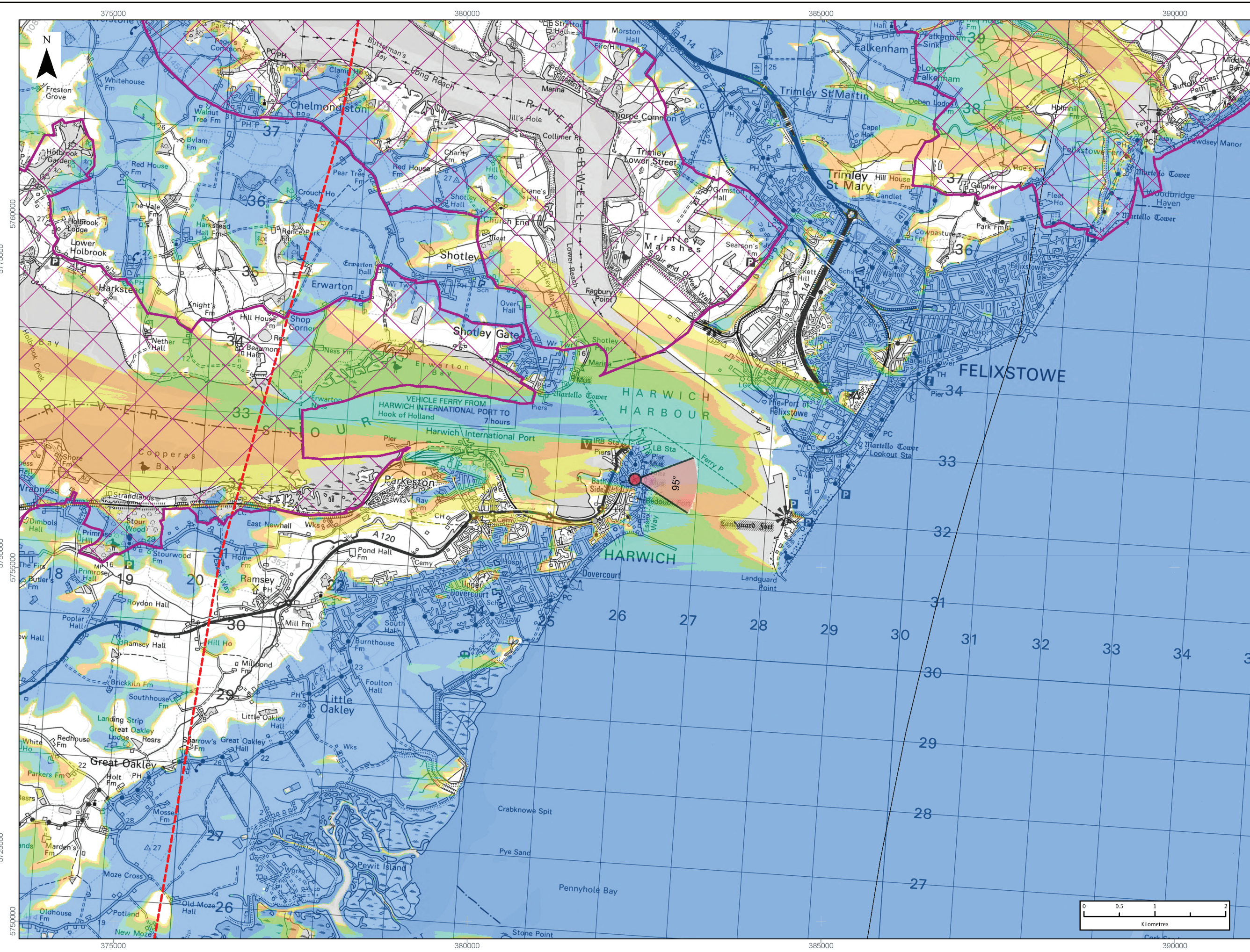
Any persons intending to use this document should satisfy themselves as to its applicability for their intended purpose.

The user of this document has the obligation to employ safe working practices for any activities referred to and to adopt specific practices appropriate to local conditions.


Revision	Date	Status/Reason for Issue	Originator	Checked	Approved
A	Mar 24	Application	GoBe	VEOWFL	VEOWFL



Viewpoint Location Plan Baseline Panorama (90 Degree View)  
Scale: 1:300,000



Viewpoint Location Plan (53.5 Degree View)  
Scale: 1:50,000



**LEGEND**

- ▲ 53.5 Degree Field of View
- ▲ 90 Degree Field of View
- Array Areas
- Offshore Export Cable Corridor
- 10km Radii
- 60km Study Area
- Suffolk Heritage Coast
- Suffolk Coast & Heaths Area of Natural Beauty (CWF Pane)
- Suffolk Coast & Heaths Area of Natural Beauty (Viewpoint Pane)

**Wind Farm Development Status**

- Operational
- Pre-Application
- Operational
- Pre-Application

No. of Blade Tips Theoretically Visible\*

1 - 10
11 - 20
21 - 30
31 - 40
41

\*TIV Parameters  
Blade Tip: 59.5m  
DTM: OS T5/T50/SRTM  
DTM Resolution: 10m  
Observer Height: 2m  
Surface Features: Excluded  
Earth Curvature: Included


**PROJECT TITLE:**  
*FIVE ESTUARIES OFFSHORE WIND FARM*

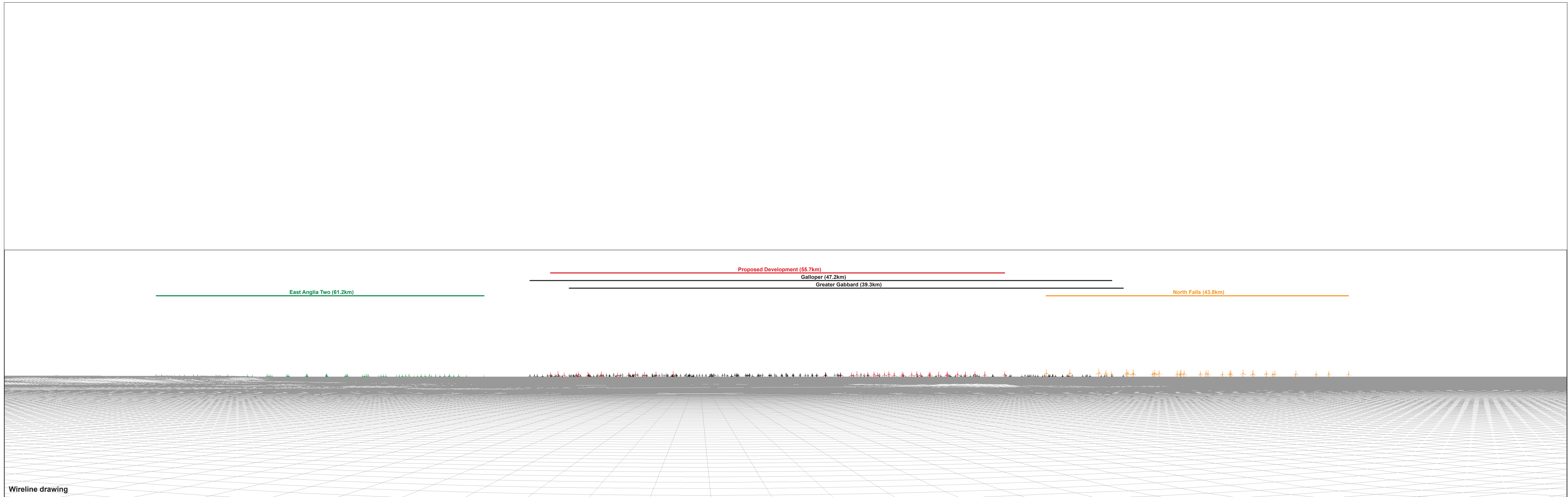
**DRAWING TITLE:**  
**Cultural Heritage Viewpoint Plan - High Lighthouse, Harwich**

VER	DATE	REMARKS	Drawn	Checked
1	05/02/2024	For Issue	RA	SM

**DRAWING NUMBER:**  
**7.17a**

SCALE: 1:50,000    PLOT SIZE: A3    DATUM: WGS84    PROJECTION: UTM31N

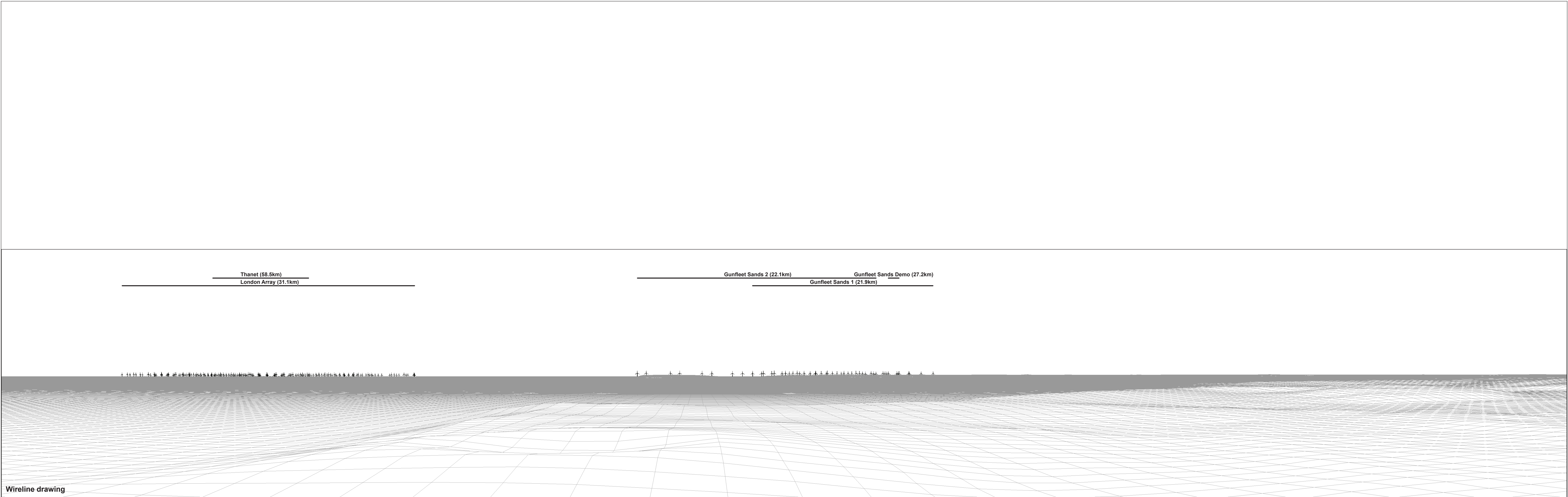




Wireline drawing

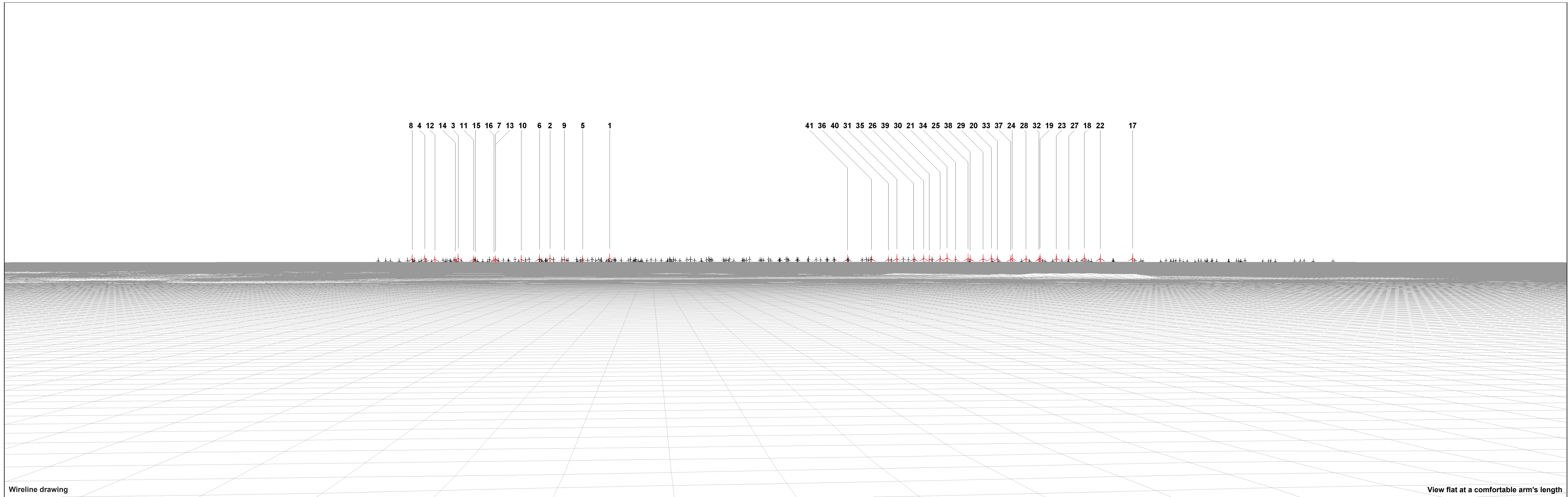
<b>OS reference:</b>	626116 E 232438 N	<b>Horizontal field of view:</b>	90° (cylindrical projection)
<b>Eye level:</b>	30.4 mAOD	<b>Principal distance:</b>	522 mm
<b>Direction of view:</b>	95°	<b>Paper size:</b>	841 x 297 mm (half A1)
<b>Nearest turbine:</b>	55.7 km	<b>Correct printed image size:</b>	820 x 130 mm
<b>VE Array Area:</b>	50.3 km		

Figure 7.17b  
 Cultural Heritage Viewpoint 3: High Lighthouse, Harwich  
 Five Estuaries



**OS reference:** 626116 E 232438 N  
**Eye level:** 30.4 mAOD  
**Direction of view:** 185°  
**Nearest turbine:** 55.7 km  
**VE Array Area:** 50.3 km

**Horizontal field of view:** 90° (cylindrical projection)  
**Principal distance:** 522 mm  
**Paper size:** 841 x 297 mm (half A1)  
**Correct printed image size:** 820 x 130 mm



Wireline drawing

View flat at a comfortable arm's length

OS reference: 626116 E 232438 N  
 Eye level: 30.4 mAOD  
 Direction of view: 95°  
 Nearest turbine: 55.7 km  
 VE Array Area: 50.3 km

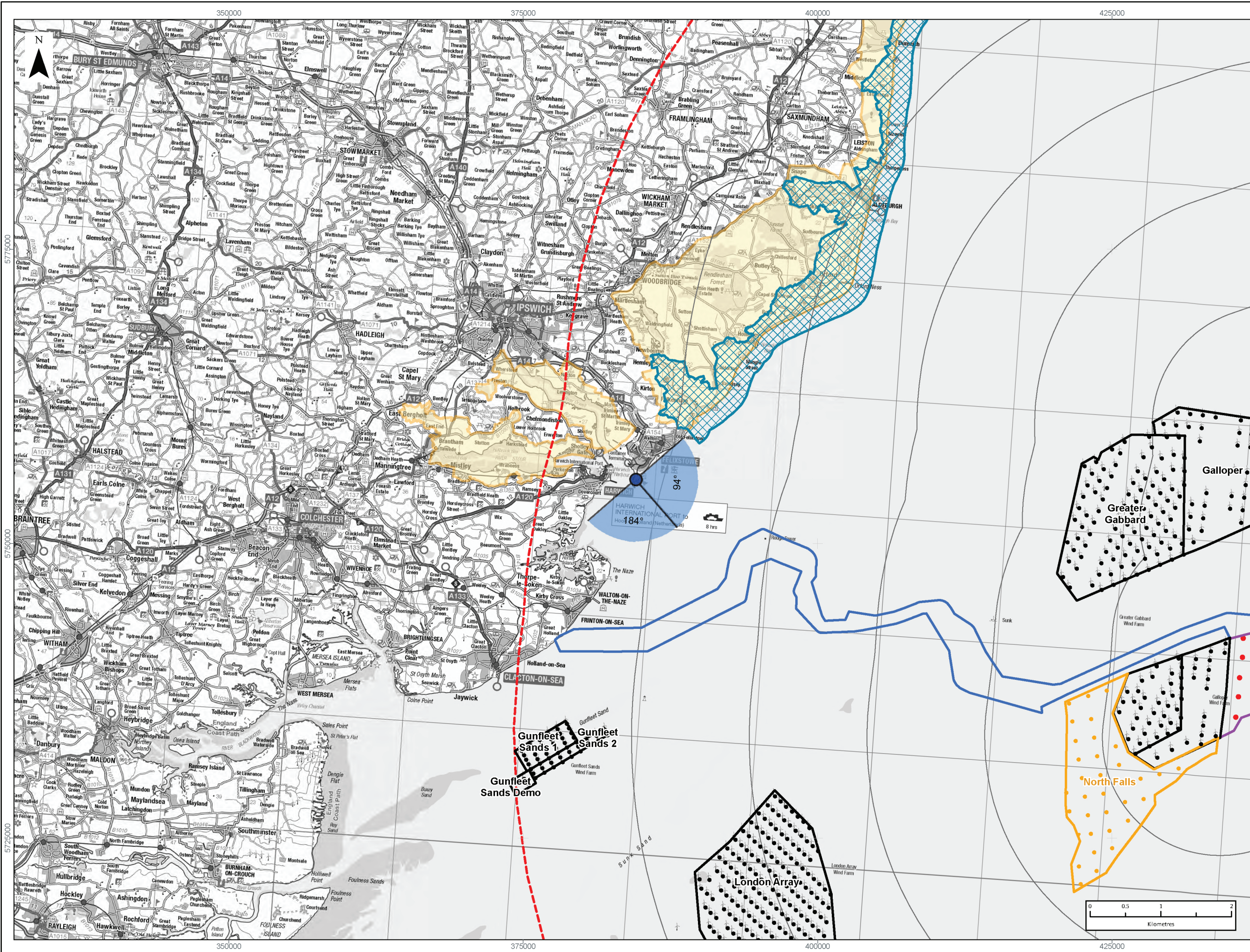
Horizontal field of view: 53.5° (planar projection)  
 Principal distance: 812.5 mm  
 Paper size: 841 x 297 mm (half A1)  
 Correct printed image size: 820 x 260 mm

Cultural Heritage Viewpoint 3: High Lighthouse, Harwich

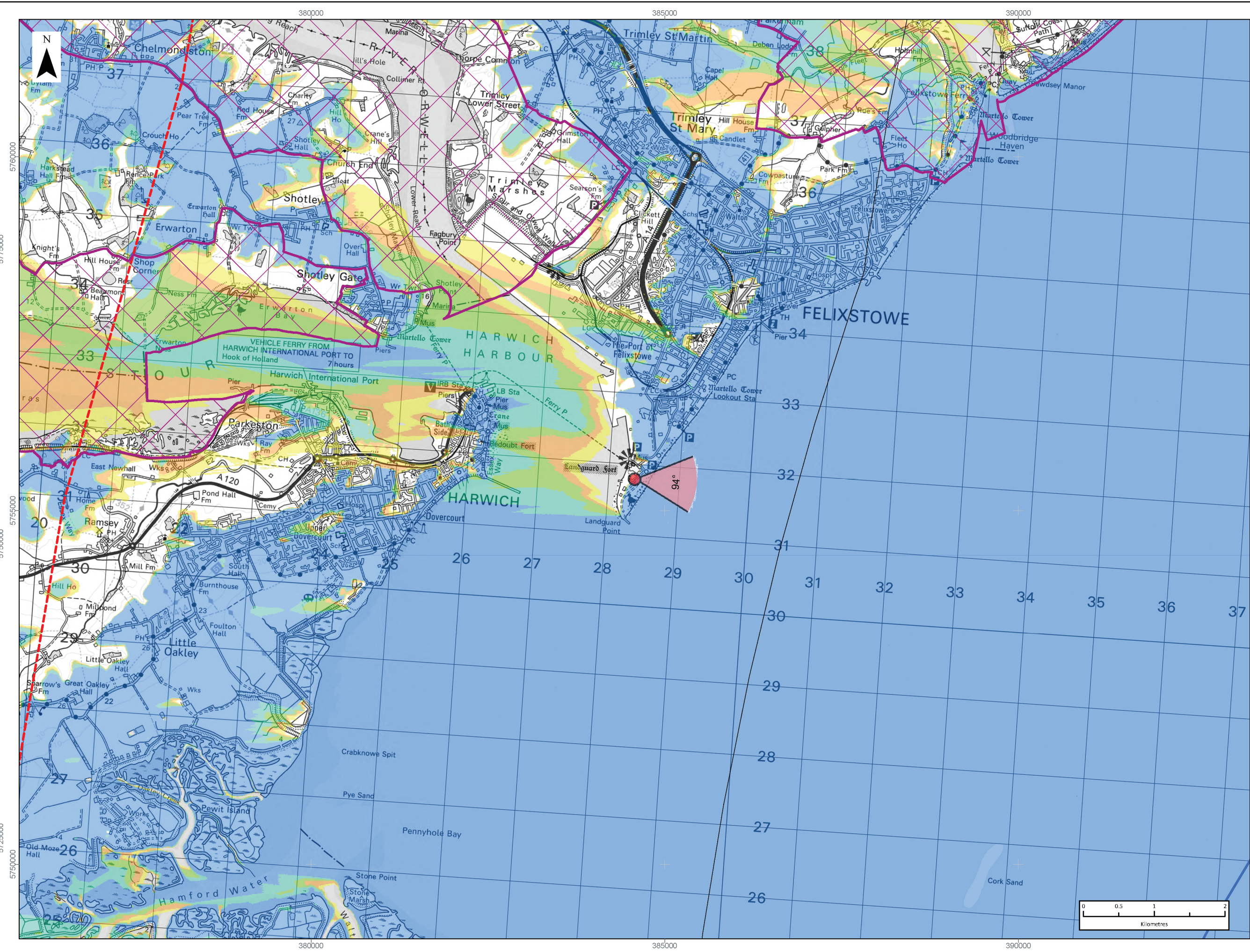
Figure 7.17d

Five Estuaries

© Crown copyright, Ordnance Survey All rights reserved (2023). Licence number 0100031673



Viewpoint Location Plan Baseline Panorama (90 Degree View)  
Scale: 1:300,000



Viewpoint Location Plan (53.5 Degree View)  
Scale: 1:50,000

**LEGEND**

- 53.5 Degree Field of View
- 90 Degree Field of View
- Indicative Turbines
- Array Areas
- Offshore Export Cable Corridor
- 10km Radii
- 60km Study Area
- Suffolk Heritage Coast
- Suffolk Coast & Heaths Area of Natural Beauty (CWF Pane)
- Suffolk Coast & Heaths Area of Natural Beauty (Viewpoint Pane)

**No. of Blade Tips Theoretically Visible\***

- 1 - 10
- 11 - 20
- 21 - 30
- 31 - 40
- 41

**Wind Farm Development Status**

- Operational
- Pre-Application

**\*TV Parameters**  
Blade Tip: 99.5m  
DTM: OS T5/150/SRTM  
DTM Resolution: 10m  
Observer Height: 2m  
Surface Features: Excluded  
Earth Curvature: Included

**PROJECT TITLE:**  
FIVE ESTUARIES OFFSHORE WIND FARM

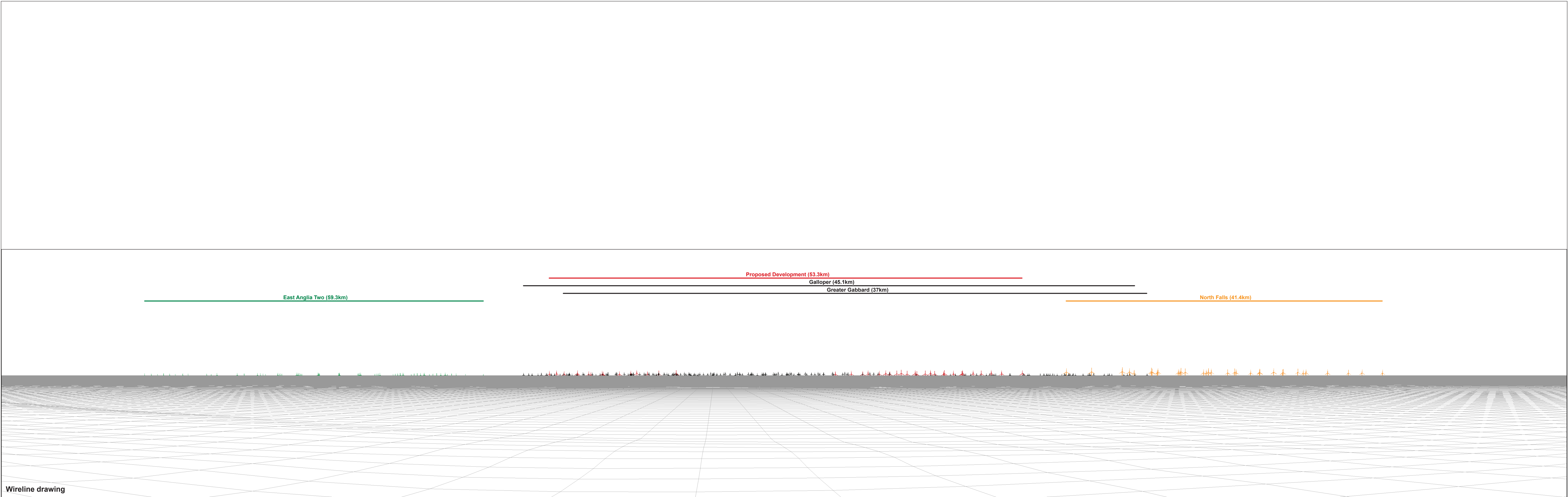
**DRAWING TITLE:**  
Cultural Heritage Viewpoint Plan - Landguard Fort

VER	DATE	REMARKS	Drawn	Checked
1	05/02/2024	For Issue	RA	SM

**DRAWING NUMBER:**  
7.18a

SCALE: 1:50,000 | PLOT SIZE: A3 | DATUM: WGS84 | PROJECTION: UTM31N

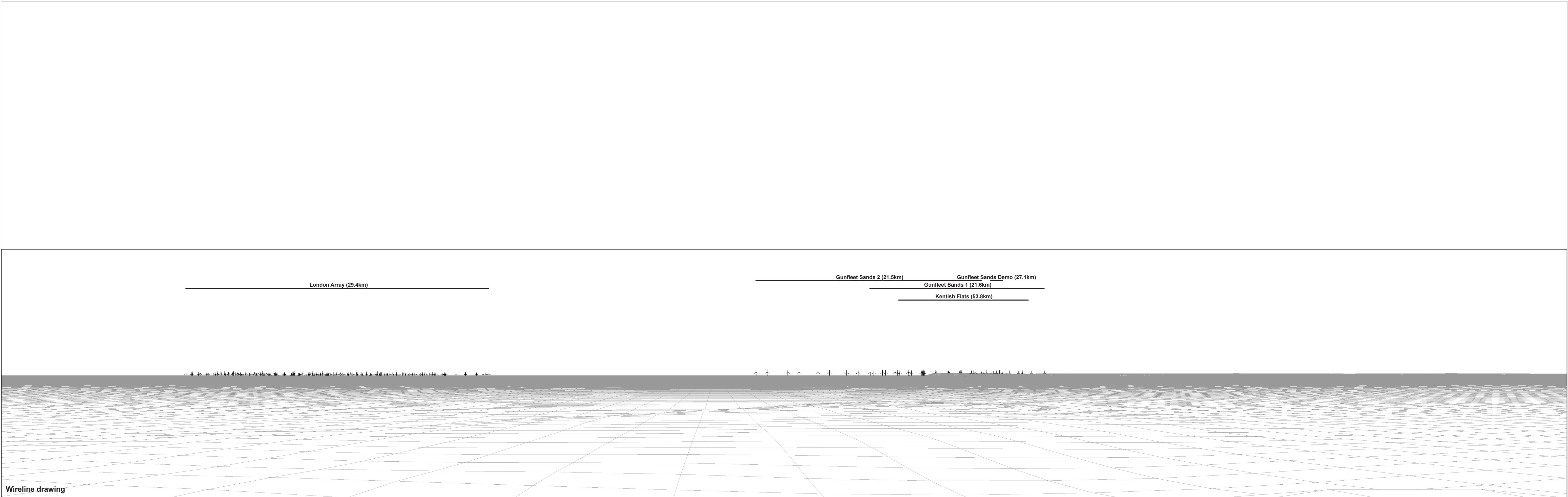
**FIVE ESTUARIES OFFSHORE WIND FARM**



Wireline drawing

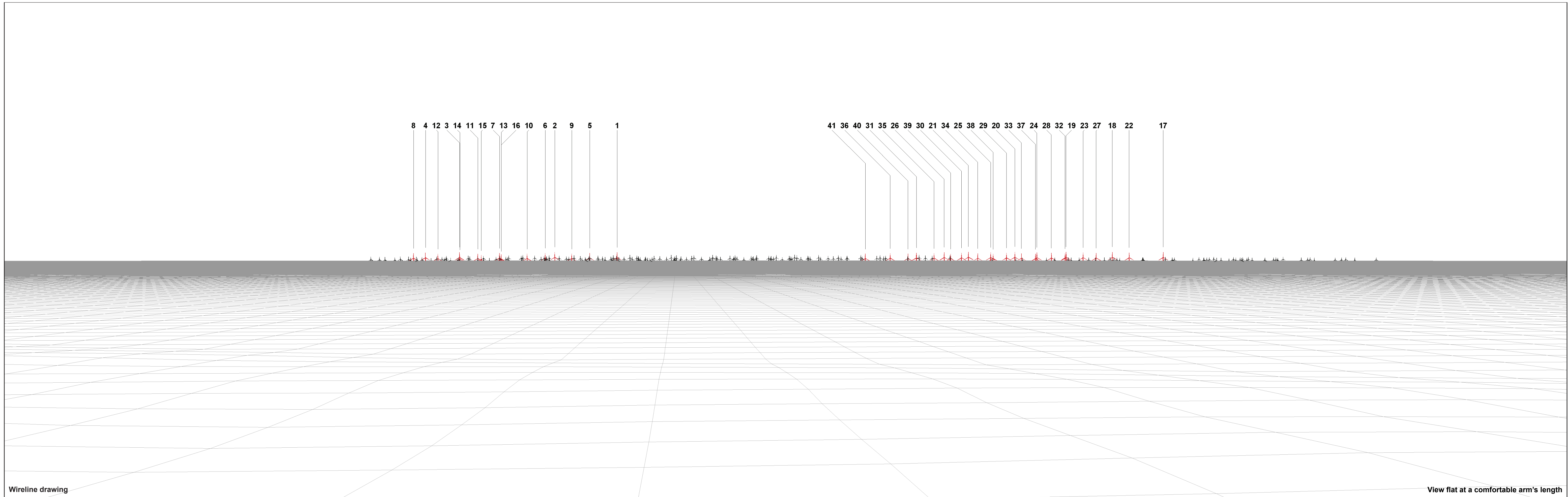
<b>OS reference:</b>	628371 E 231788 N	<b>Horizontal field of view:</b>	90° (cylindrical projection)
<b>Eye level:</b>	15.0 mAOD	<b>Principal distance:</b>	522 mm
<b>Direction of view:</b>	94°	<b>Paper size:</b>	841 x 297 mm (half A1)
<b>Nearest turbine:</b>	53.3 km	<b>Correct printed image size:</b>	820 x 130 mm
<b>VE Array Area:</b>	50.3 km		





Wireline drawing

**OS reference:** 628371 E 231788 N  
**Eye level:** 15.0 mAOD  
**Direction of view:** 184°  
**Nearest turbine:** 53.3 km  
**VE Array Area:** 50.3 km  
**Horizontal field of view:** 90° (cylindrical projection)  
**Principal distance:** 522 mm  
**Paper size:** 841 x 297 mm (half A1)  
**Correct printed image size:** 820 x 130 mm



Wireline drawing

View flat at a comfortable arm's length

OS reference: 628371 E 231788 N  
 Eye level: 15.0 mAOD  
 Direction of view: 94°  
 Nearest turbine: 53.3 km  
 VE Array Area: 50.3 km

Horizontal field of view: 53.5° (planar projection)  
 Principal distance: 812.5 mm  
 Paper size: 841 x 297 mm (half A1)  
 Correct printed image size: 820 x 260 mm



**F I V E**   
**ESTUARIES**  
OFFSHORE WIND FARM

PHONE  
EMAIL  
WEBSITE  
ADDRESS

0333 880 5306  
fiveestuaries@rwe.com  
[www.fiveestuaries.co.uk](http://www.fiveestuaries.co.uk)

COMPANY NO

Five Estuaries Offshore Wind Farm Ltd  
Windmill Hill Business Park  
Whitehill Way, Swindon, SN5 6PB  
Registered in England and Wales  
company number 12292474

